



**ZENOAH**  
**KOMATSU**

# SERVICE PARTS LIST

**CHAINSAW**

**EFFECTIVE: JUN. 2003**

# G2500

**NOTE :**

1. Use KOMATSU ZENOAH genuine parts specified in the parts list for repair and/or replacement.
2. KOMATSU ZENOAH does not warrant the machines, those which have been damaged by the use of any parts other than those specified by the company.
3. When placing orders of parts for repair and/or replacement, check if the model name and the serial number are suitable to those specified in the parts list, then use parts number described in the parts list.
4. The contents described in the parts list may change due to improvement.
5. The parts for the machine shall be supplied within ten (10) years after the machine is discontinued.  
[It is possible that some specific parts may be subject to change of their delivery term and list price within the limit of ten (10) years after the machine is discontinued. And it is also possible that some parts may be available even after the limit of ten (10) years.]

**SERIAL NUMBERS APPLICABLE:**

**100101~**

Fig. 1 POWER UNIT

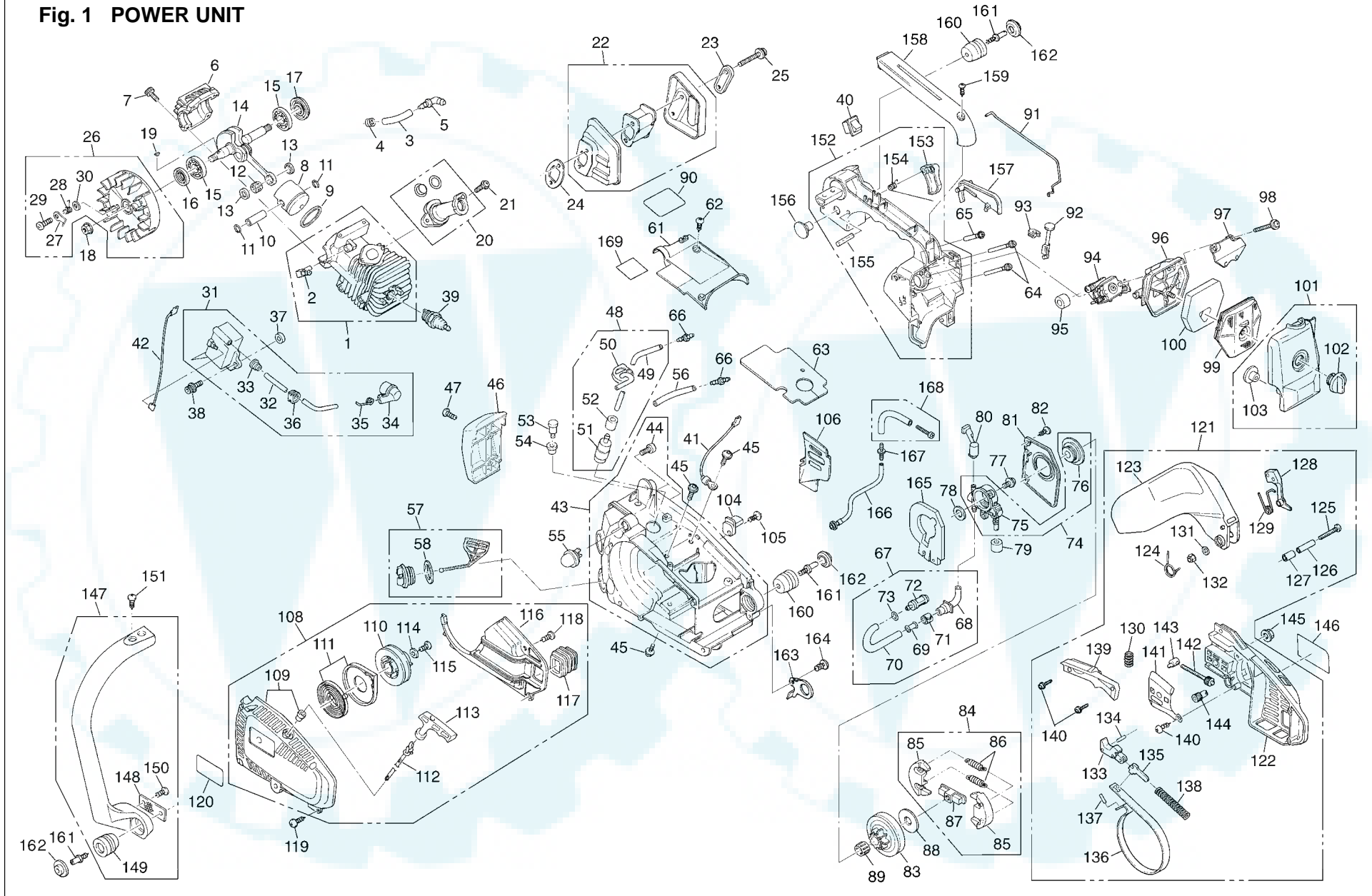
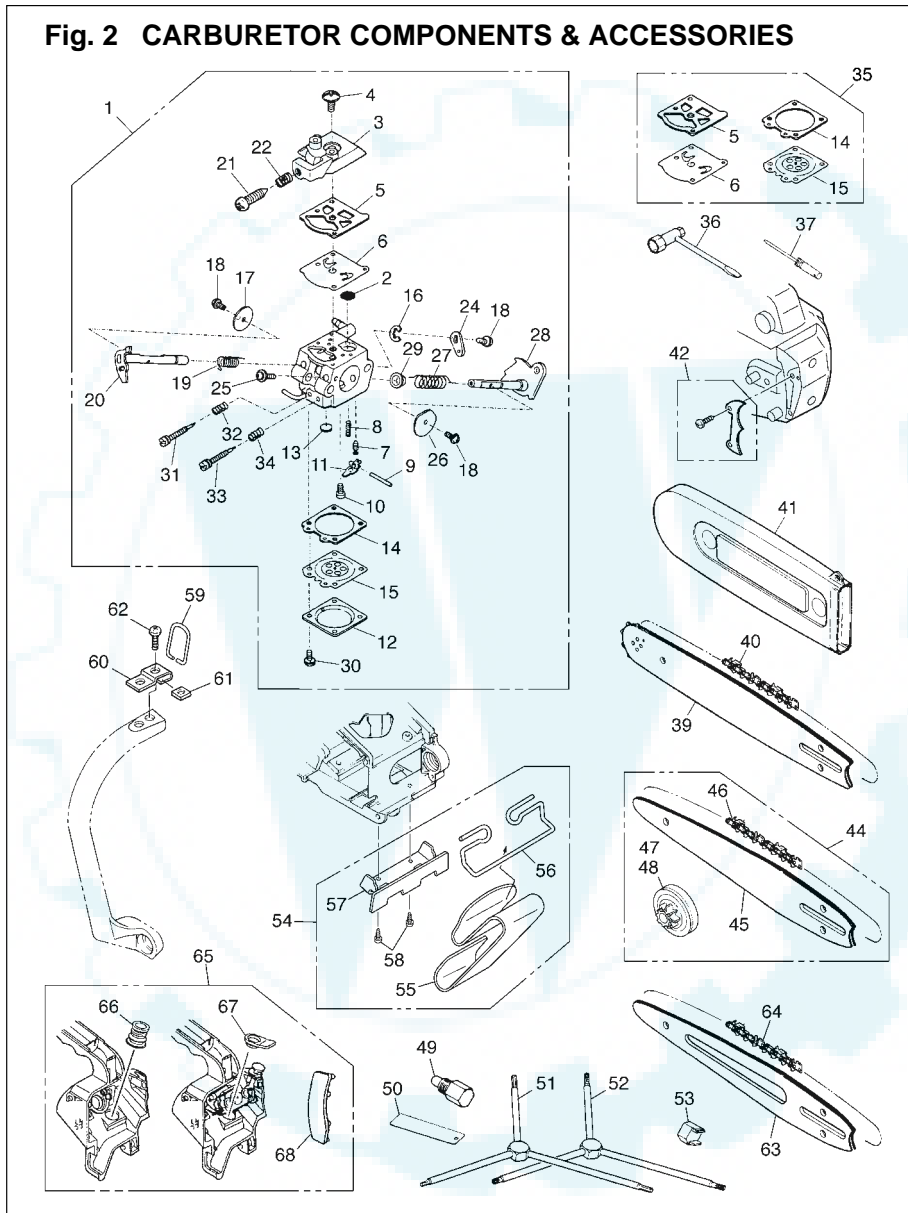


Fig. 1 POWER UNIT

Key#	PART NUMBER	DESCRIPTION	Q'TY /UNIT	NOTE	Key#	PART NUMBER	DESCRIPTION	Q'TY /UNIT	NOTE	Key#	PART NUMBER	DESCRIPTION	Q'TY /UNIT	NOTE
1	T2046-12100	CYLINDER COMP	1		58	2841-31820	• GASKET	2		114	1140-51230	• WASHER	1	
2	2841-12120	• ELBOW	1							115	2630-75510	• SCREW	1	
3	2841-12210	PIPE	1		61	2841-31911	COVER	1		116	2841-75611	• COVER	1	
4	3310-82230	CLIP	1		62	2630-31950	SCREW	2		117	2841-75710	• PIPE	1	
5	3350-34320	ELBOW	1		63	2841-31921	MAT	1		118	2630-31950	• SCREW	1	
6	2841-21110	CRANKCASE	1		64	2841-37111	PIPE	2		119	2630-31950	SCREW	4	
7	T4950-52021	BOLT	4		65	2841-37121	PIPE	1		120	2475-75131	LABEL	1	
8	2841-41112	PISTON	1		66	2841-37150	JOINT	2		121	2475-54000	BRAKE ASSY	1	
9	2841-41210	RING, piston	1		67	2841-31300	PIPE COMP	1		122	2475-54110	• COVER	1	
10	1600-41310	PIN	1		68	2841-31311	• PIPE	1		123	2841-54121	• GUARD	1	
11	1260-41320	RING, snap	2		69	3310-57320	• JOINT	1		124	2872-54120	• SPRING	1	
12	5500-41410	BEARING	1		70	2841-31330	• PIPE	1		125	0263-80530	• SCREW	1	
13	1101-41340	WASHER	2		71	3310-57340	• CLIP	1		126	2872-54140	• SPACER	1	
14	2841-42001	SHAFT COMP	1		72	2670-23131	• FILTER	1		127	2850-54211	• SPACER	1	
15	1155-21240	BEARING	2		73	1260-41320	• RING	1		128	2851-54222	• WEIGHT	1	
16	T2041-21210	OIL SEAL	1		74	2841-55103	OIL PUMP ASSY	1		129	2841-54230	• SPRING	1	
17	T2041-21220	OIL SEAL	1		75	2841-55112	• OIL PUMP	1		130	2851-54270	• SPRING	1	
18	1650-43230	NUT	1		76	2850-55121	• WORM	1		131	01641-20508	• WASHER	1	
19	1000-43240	KEY	1		77	0263-30416	SCREW	2		132	3310-53331	• NUT	1	
20	2841-06011	PIPE SET	1		78	2850-55211	WASHER	1		133	2851-54301	• LEVER COMP	1	
21	0263-30416	SCREW	2		79	2670-55220	SEAL	1		134	2851-54350	• ROLLER	1	
22	T2041-15100	MUFFLER ASSY	1		80	2841-55250	PIPE	1		135	2670-54411	• ARM	1	
23	T2046-15140	PLATE	1		81	2841-55310	COVER	1		136	2841-54510	• BAND	1	
24	2841-15210	GASKET	1		82	2630-31950	SCREW	2		137	3356-24140	• ROLLER	1	
25	2670-82210	SCREW	2		83	2475-51110	DRUM	1	3/8-6T	138	2670-54610	• SPRLNG	1	
26	2841-71102	ROTOR ASSY	1		84	2841-51110	DRUM	1	1/4-8T	139	2841-54620	• COVER	1	
27	2841-71120	• PAWL	2		85	2475-51220	• SHOE	2		140	2630-33610	• SCREW	4	
28	T2044-71240	• SPRING	2		86	2841-51230	• SPRING	2		141	2841-53211	• PLATE	1	
29	2850-71140	• SCREW	2		87	2475-51240	• BOSS	1		142	2841-53240	• SCREW	1	
30	2850-71151	• WASHER	2		88	2841-51210	PLATE	1		143	2810-53221	• NUT	1	
31	2841-71200	MODULE ASSY	1		89	3310-51310	BEARING	1		144	2671-53230	• GEAR	1	
32	2841-71220	• CORD	1		90	2475-31951	LABEL	1		145	3350-53410	NUT	1	
33	2616-71320	• CAP	1		91	2841-82510	ROD	1		146	2475-53121	LABEL	1	
34	2850-72110	• CAP	1		92	2841-82411	ROD	1		147	2841-32101	HANDLE ASSY	1	
35	1400-72121	• SPRING	1		93	2841-82421	GROMMET	1		148	2841-32150	• STOPPER	1	
36	1140-72110	• GROMMET	1		94	2841-81001	CARBRETOR ASSY	1	WT-481B	149	2841-35110	• DAMPER	1	
37	5500-72150	SPACER	2		95	2841-82210	SEAL	1		150	2630-75510	• SCREW	1	
38	3350-14150	BOLT	2		96	2841-82112	PLATE	1		151	2630-75510	SCREW	2	
39	1630-73110	SPARK PLUG	1	RCJ7Y	97	2841-82120	PLATE	1		152	2841-33100	HANDLE COMP	1	
40	2850-74102	SWITCH ASSY	1		98	0263-30545	SCREW	2		153	3356-33312	• LEVER THROTTLE	1	
41	2850-74213	CORD	1		99	2841-83111	CLEANER	1		154	3356-33321	• SPRING	1	
42	2841-74220	CORD	1		100	2841-83120	ELEMENT	1		155	04025-00524	• SPRING PIN	1	
43	2841-31107	CASE COMP	1		101	2841-83303	COVER COMP	1		156	2841-35180	STOPPER	1	
44	2841-31141	• SCREW	2		102	2841-83320	• KNOB	1		157	3356-33352	ARM	1	
45	2870-31750	SCREW	4		103	2841-83330	• GROMMET	1		158	2841-34110	COVER	1	
46	2475-31130	COVER	1		104	2630-53412	CATCHER	1		159	2630-31950	SCREW	1	
47	2630-31950	SCREW	2		105	2630-32170	SCREW	1		160	2841-35110	DAMPER	2	
48	2841-31202	PIPE ASSY	1		106	2841-53310	PLATE	1		161	2841-35120	BOLT	3	
49	2841-31210	• PIPE	1							162	2841-35150	CAP	3	
50	2841-31252	• GROMMET	1							163	2841-98210	HANGER	1	
51	1850-85300	• FILTER	1							164	2630-33610	SCREW	1	
52	2841-31280	• COLLAR	1		108	2841-75001	STARTER ASSY	1		165	2841-55220	SEAL	1	
53	2850-34501	BREATHER ASSY	1		109	2841-75101	• CASE COMP	1		166	2841-31450	PIPE	1	
54	3317-85120	GROMMET	1		110	2841-75210	• REEL	1		167	2841-37150	JOINT	1	
55	2850-81900	PUMP	1		111	2841-75300	• SPRING COMP	1		168	2100-31500	PIPE COMP	1	
56	2841-31260	PIPE	1		112	1850-75160	• ROPE	1		169	T2990-21100	LABEL	1	
57	2841-31801	CAP ASSY	2		113	3330-75421	• KNOB	1						

Fig. 2 CARBURETOR COMPONENTS & ACCESSORIES



Key#	PART NUMBER	DESCRIPTION	Q'TY /UNIT	NOTE
1	T2041-81001	CARBURETOR ASSY	1	WT481B
2	3306-81380	• SCREEN	1	
3	2850-81120	• COVER	1	
4	3310-81130	• SCREW	1	
5	3304-81140	• GASKET	1	
6	1172-81150	• DIAPHRAM	1	
7	3356-81310	• VALVE	1	
8	2841-81270	• SPRING	1	
9	3310-81250	• PIN	1	
10	3310-81240	• SCREW	1	
11	3310-81230	• LEVER	1	
12	3310-81280	• COVER	1	
13	1480-81420	• PLUG	1	
14	2850-81290	• GASKET	1	
15	3310-81260	• DIAPHRAM	1	
16	1148-81390	• RING	1	
17	3310-81341	• VALVE	1	
18	2880-81470	• SCREW	3	
19	2670-81410	• SPRING	1	
20	2841-81370	• SHAFT	1	
21	2630-81330	• SCREW	1	
22	3350-81380	• SPRING	1	
24	2841-81440	• LEVER	1	
25	2850-81190	• SCREW	1	
26	2841-81451	• VALVE	1	
27	T2002-81350	• SPRING	1	
28	2841-81460	• SHAFT	1	
29	2850-81430	• BUSHING	1	
30	3310-81351	• SCREW	4	
31	2841-81170	• NEEDLE	1	
32	1491-81160	• SPRING	1	
33	T2104-81330	• NEEDLE	1	
34	3080-81320	• SPRING	1	
35	2850-06020	GASKET KIT	1	
36	3320-91140	WRENCH	1	
37	2670-91150	DRIVER	1	
39	2475-52110	BAR	1	10" SP
40	2475-52210	CHAIN	1	91VG-40E
41	3622-52310	PROTECTOR	1	
42	2475-98100	SPIKE KIT	1	OP
44	CB1011H	BAR KIT	1	OP
45	2475-52120	• BAR	1	10" CV
46	3622-52210	• CHAIN	1	25AP-60E
47	2475-51110	• DRUM	1	3/8-6T
48	2841-51110	• DRUM	1	1/4-8T
49	3350-96220	STOPPER	1	PISTON (OP)
50	3350-96240	GAUGE	1	AIR GAP (OP)
51	3304-97611	WRENCH	1	HEXAGON (OP)
52	2670-96410	WRENCH	1	TORX (OP)
53	2841-96110	WRENCH	1	CLUTCH (OP)
54	T2046-98100	BELT HANGER KIT	1	OP
55	T2046-98110	• HOOK	1	OP
56	T2046-98120	• HANGER	1	OP
57	T2046-98130	• PLATE	1	OP
58	2630-33610	• SCREW	2	OP
59	T2046-32180	HANGER	1	OP
60	T2046-32190	PLATE	1	OP
61	T2046-32170	NUT	1	OP
62	2630-32170	SCREW	1	OP
63	2980-52110	BAR	1	OP
64	3622-52210	CHAIN	1	25AP-60E(OP)
65	2841-98301	ICING KIT	1	
66	2841-98310	• PIPE	1	
67	2841-98320	• CAP	1	
68	2841-98330	• PROTECTOR	1	



**KOMATSU ZENOAH CO.**

1-9 Minamidai, Kawagoe, Saitama, 350-1192 Japan